

# Enterprise Schedule Analysis

## What's New in Acumen Fuse 2.0

Dr. Dan Patterson, PMP  
*CEO & President*  
Acumen



# Acumen

Project Confidence

- Project analytics thought leader
- Oracle and Microsoft Partner
- Headquartered in Austin, TX
- Europe, Asia & Australian local resellers/partners



World Renowned  
Risk Assessment  
Workshops



Oracle accredited  
Training Partner



Acumen Fuse<sup>®</sup>

Metric Analysis &  
Visualization

# Acumen Fuse 2.0

## Metric Analysis and Visualization



- **Metric Analysis:**
  - Schedule quality
  - Cost forecast accuracy
  - Risk model realism
  - Performance
  - Earned Value
- **Visualization:**
  - Ribbons
  - Metric results

# How does it work?

## Import Data

Primavera | MS Project | Pertmaster | Deltek | Asta | MS Excel

Schedule | Cost | Risk | Performance | Earned Value

## Root Cause Analysis

Logic analysis | Ribbon analysis | Forensic analysis

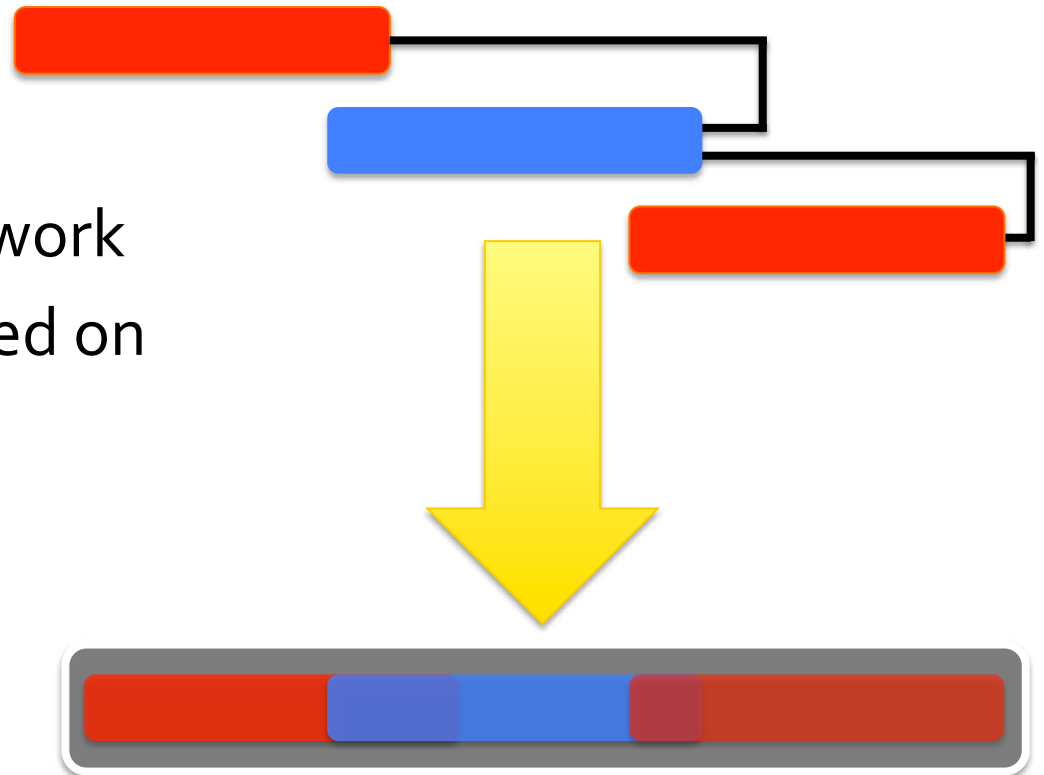
## Visualize and Publish results

Executive Briefing | Analyst Report | Ribbon Report

## Resolve Issues

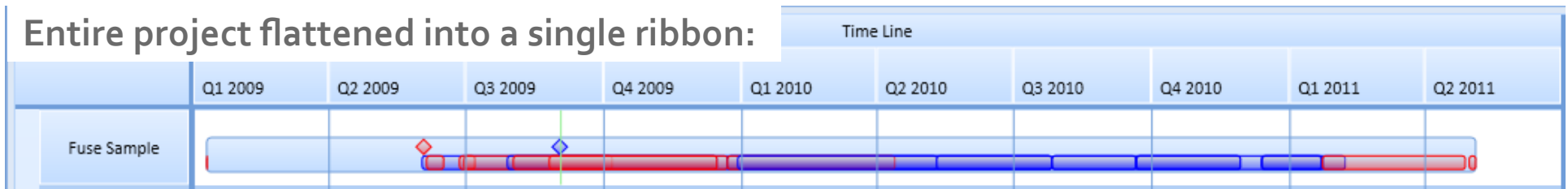
# Ribbon Analysis

- What are Ribbons?
  - Flatten data
  - Retain sequence of work
  - Group activities based on a common attribute
- How do they help?
  - Enable analysis beyond project level
  - Means of simplifying data

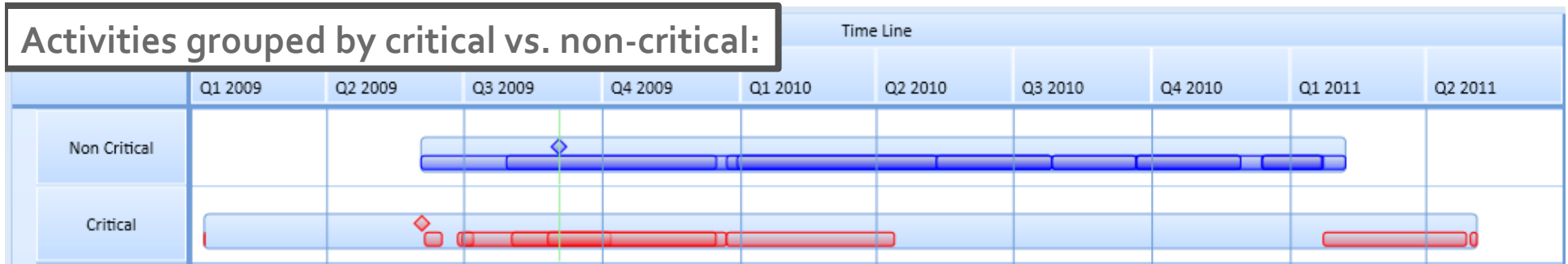


# Ribbon Examples

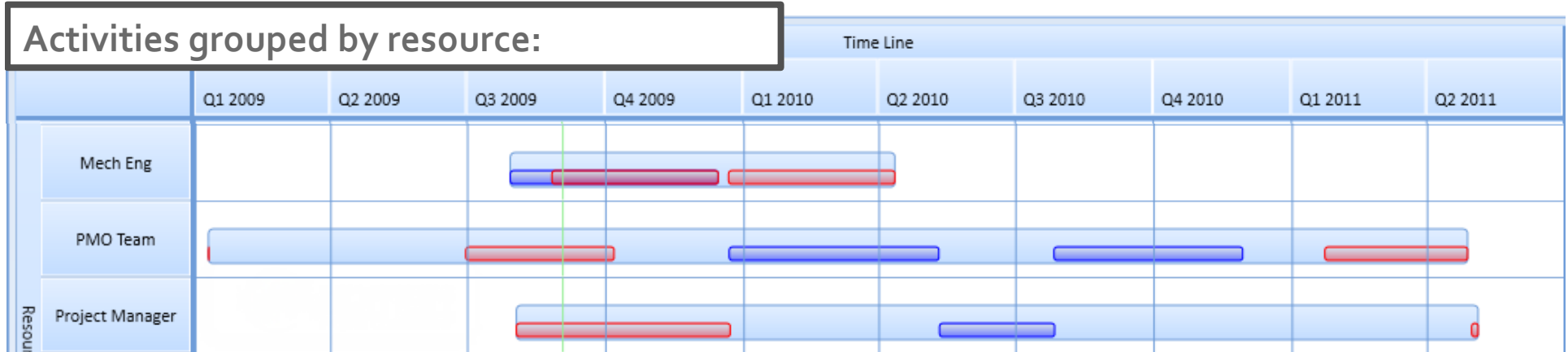
Entire project flattened into a single ribbon:



Activities grouped by critical vs. non-critical:



Activities grouped by resource:

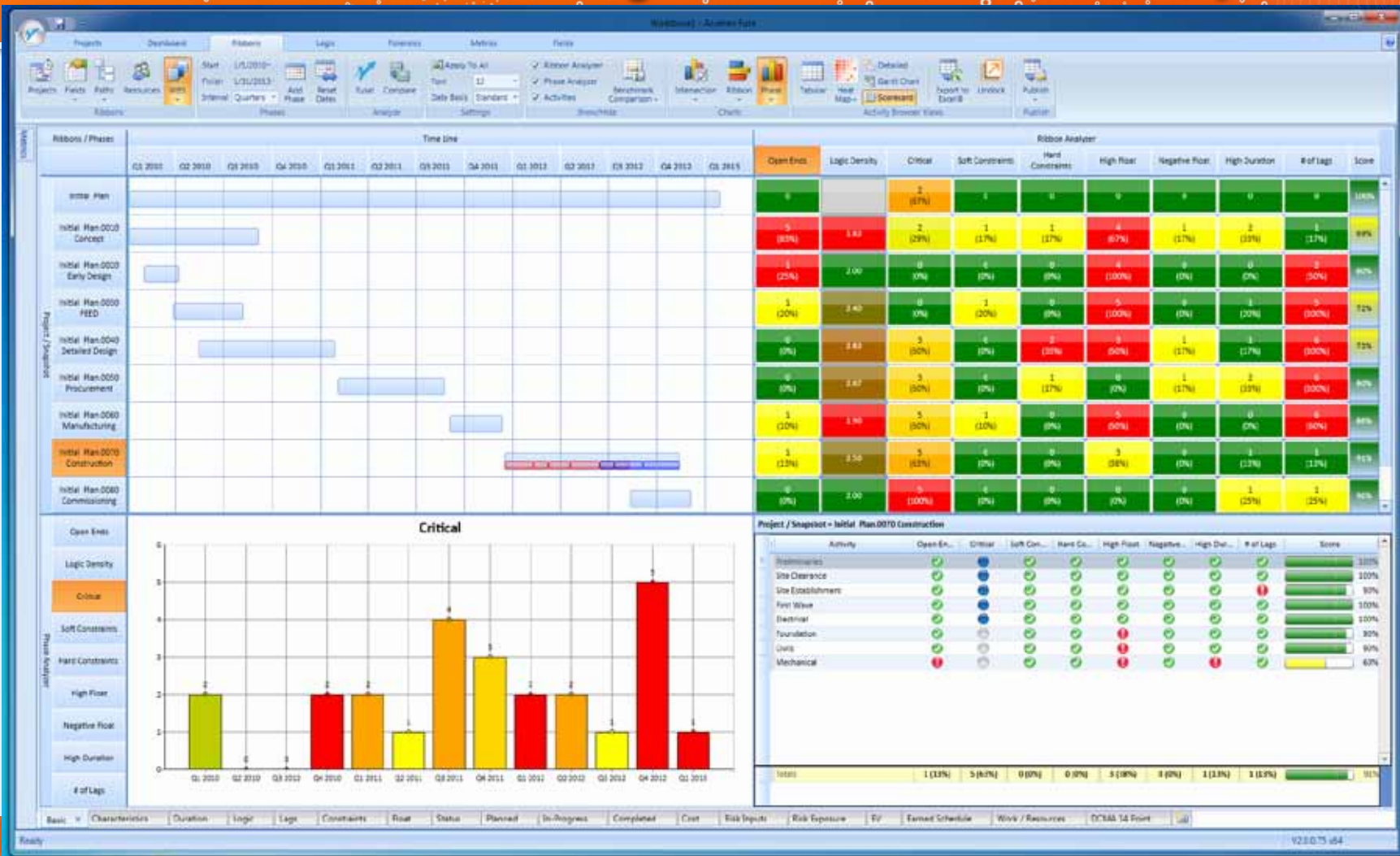


# Fuse Dashboard

- **Dashboard**
  - Project Status
  - Schedule Quality
  - Forensics & Trending
- Drill down from each chart, graph, or gauge to find the activity drivers



# Fuse Project Analysis

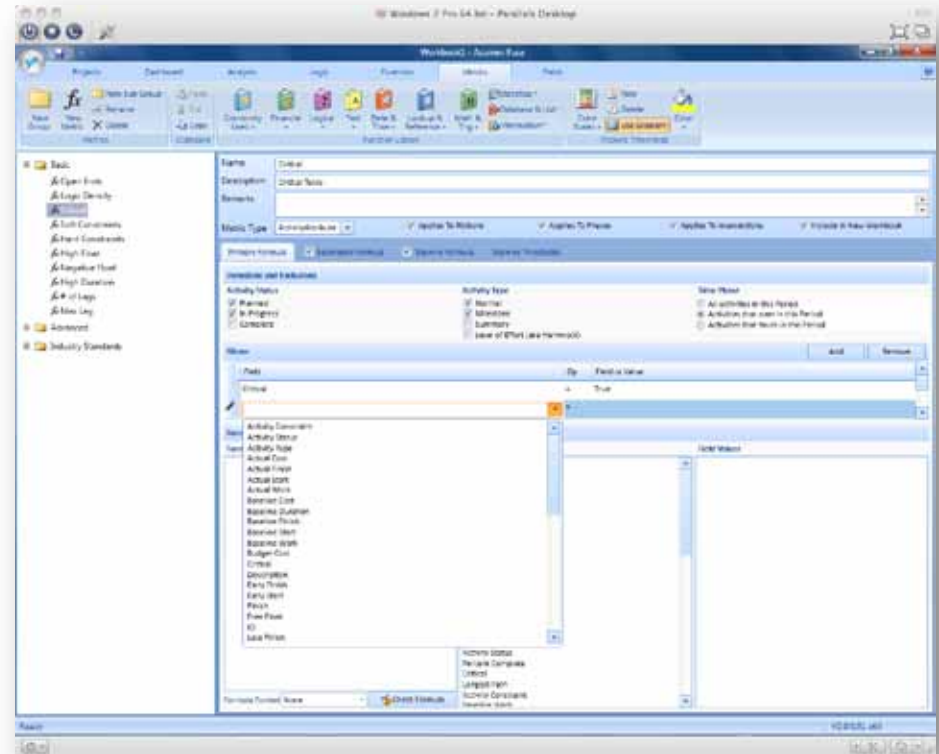




# Metric Editor

## Metric Builder

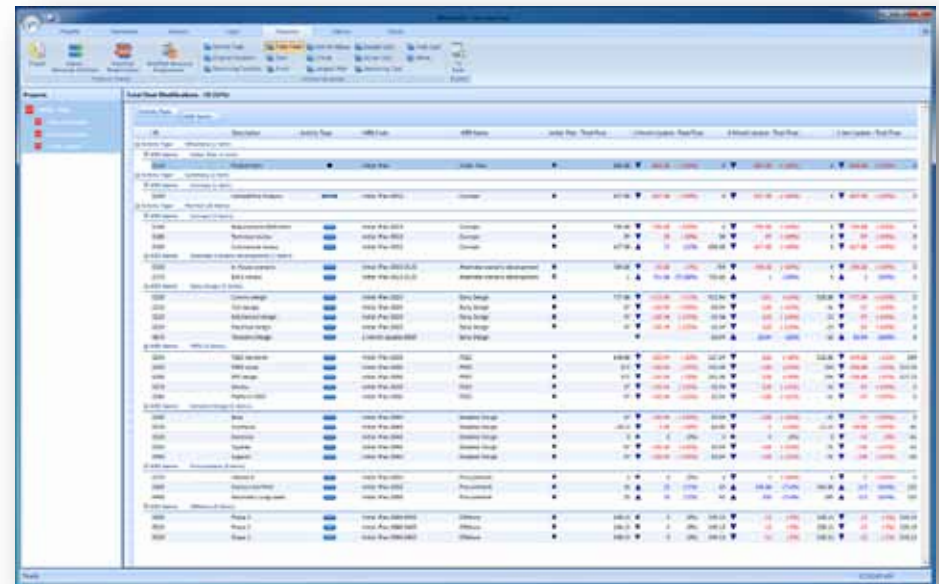
- **Easy to use metric building blocks**
  - New/edit metrics
  - Share throughout an organization
  - No need for formulas!!
  - Compatible with existing custom metrics



# Forensic Analysis

## *Forensic Analyzer*

- **Compare variances**
  - Track project performance through snapshots
  - Identify root cause of delays and overruns
  - What-if analysis



The screenshot displays a complex project management software interface. The main area is a Gantt chart or resource allocation table with multiple columns for tasks, resources, and dates. The interface includes a menu bar at the top, a toolbar, and a sidebar on the left. The data is organized into several sections, likely representing different project phases or resource groups. The overall layout is typical of professional project management software.

# Included Reports

- Verbose summary of analysis, useful for PMs and Executives

## Executive Briefing



- Score and compare quality of multiple projects or ribbons

## Scorecards



- Uses color and size to help pinpoint and prioritize project issues

## Heat Map



- Metric results in spreadsheet form

## Ribbon Report



- List of scheduling flaws in spreadsheet form

## Analyst Report



# Demo Use-Cases

- Schedule Analysis
  - Owner/contractor
  - Bid analysis
- Logic Review
  - Clean, complete
- Project Forensics
  - Update complete
  - Trending/variance analysis
- Integrating Cost and Schedule



# Additional Updates

- Performance improvements:
  - Load 100,000 activities in seconds
  - Integration with Asta Powerproject
  - 8 x less memory required
  - 3 x smaller files generated
- Reporting
  - Generate reports through extended integration with MS Office including direct copy and paste of Fuse views and data



# Wrap-Up

- Fuse 2.0: major evolution in schedule analysis
  - Public release this Friday!
  - Freely available evaluation copy for download
- Licensing
  - Named, concurrent & Citrix based licensing
- More Information
  - [www.projectacumen.com](http://www.projectacumen.com)
  - [info@projectacumen.com](mailto:info@projectacumen.com)



**Austin Office**

7320 N Mopac  
Suite 301  
Austin, TX 78731  
+1.512.291.6261

**Houston Office**

1001 Dairy Ashford  
Suite 100  
Houston, Texas 77077  
+1.713.595.6620

[www.projectacumen.com](http://www.projectacumen.com)