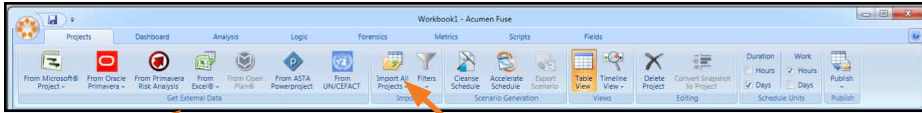




// Quick Start Guide

Projects Tab

Use the “Get External Data” toolbar to set up the Fuse workbook by linking to a single or multiple schedules, cost estimates or risk models. Bring in baseline schedules or project snapshots here as well.

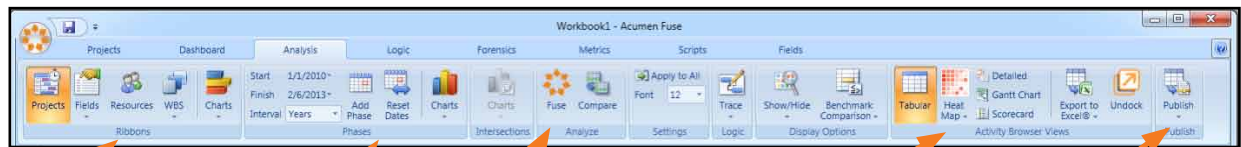


1. Get External Data

2. Once you have linked to a project, click import.

Analysis Tab

Set up your analysis by selecting the grouping you want to see as well as the time-phases. Then, hit “Fuse” to run the analysis. Change the activity browser view or publish the results to a report.



Grouping Options

Phase options

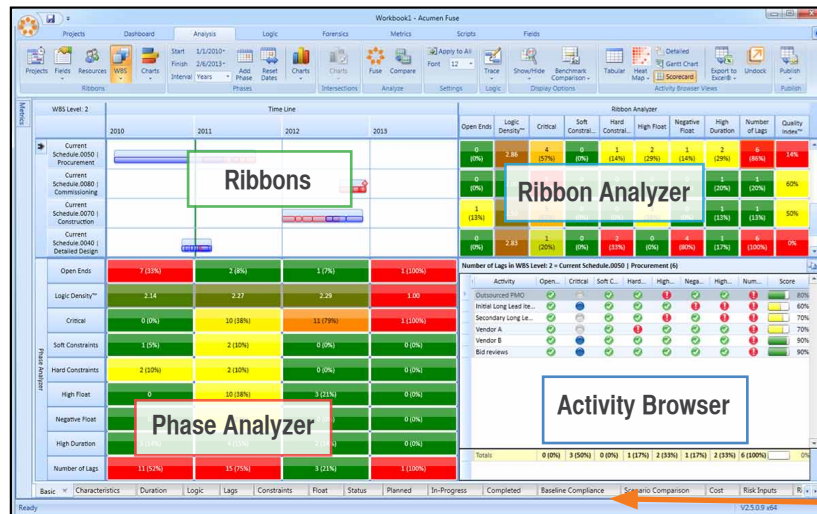
Fuse Analysis

Activity Browser options

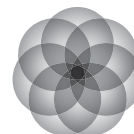
Reporting Options

Metric Results

- > Ribbon Analyzer: View metrics results for individual activity groupings
- > Phase Analyzer: View metric results for individual time-phases
- > Activity Browser: View the activities included in a ribbon, phase or metric result

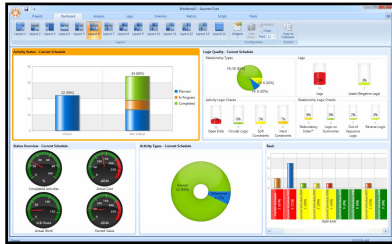


Use the tabs for pre-defined ribbon views



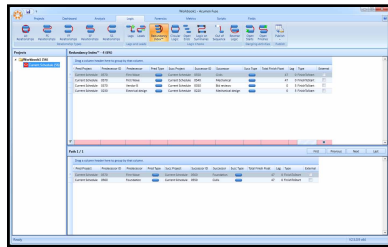
Dashboard Tab

Now that the Fuse workbook has been set up, view the dashboard by selecting the dashboard tab at the top to get a high level overview of project status and quality. Click on an image to view the driving activities or additional information.



Logic Tab

Identify open ends, leads, lags, out of sequence activities, reverse logic, redundant logic, and circular logic. Group results by dragging a column heading to the top or select a column heading to sort results by.



Metrics Tab

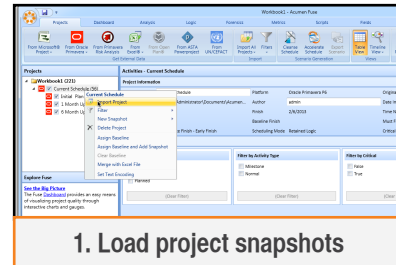
Use the metrics tab to create new metrics and edit existing ones. Filter the activities you want included in each metric by activity status, type, or time period, then select the "add" button to add additional filters and criteria to the metric. A drop down menu will appear allowing you to choose activity fields and functions such as greater than, equal to, less than, etc.

1. Add activity filters
2. Add metric criteria
3. Select field
4. Select function
5. Write in value or select field

The screenshot shows the Metrics Tab interface with five numbered callouts pointing to specific elements: 1. 'Add activity filters' points to the 'Filters' section. 2. 'Add metric criteria' points to the 'Criteria' section. 3. 'Select field' points to the 'Field' dropdown menu. 4. 'Select function' points to the 'Function' dropdown menu. 5. 'Write in value or select field' points to the 'Field Values' input field.

Forensics Tab

Before using the forensics tab, you must first load project snapshots to compare against one another. On the Projects Tab, select the project you want to compare to. While the project is highlighted, use the "Get External Data" toolbar to add a snapshot for comparison.



Once you have loaded all of your snapshots, click the forensics tab to view variances between them.

Use the toolbar at the top of the forensics tab to select the attributes that you want Fuse to identify variances of. Publish this view to Excel for a Project Forensics Report. Drag column headings to the top to group results or select a column heading to sort results by.

